

\$65,000 - N/a, Edmonton

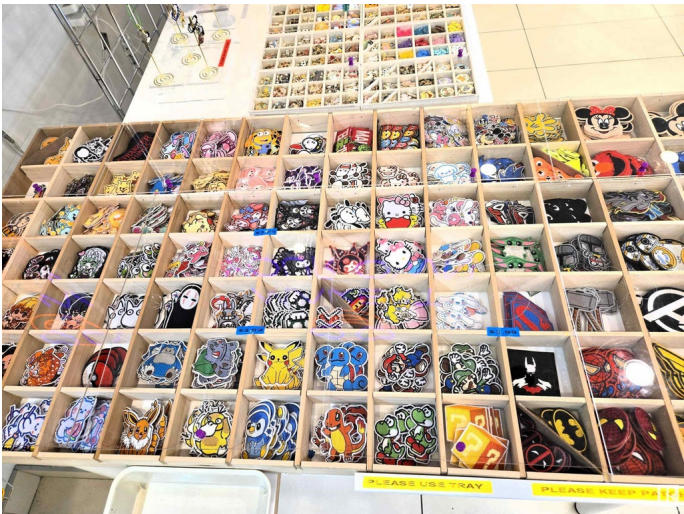
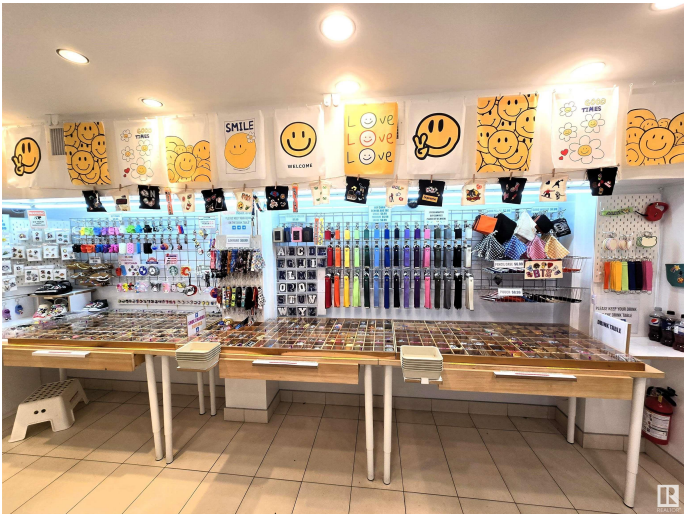
MLS® #E4403944

\$65,000

0 Bedroom, 0.00 Bathroom,
Business on 0.00 Acres

Summerlea, Edmonton, AB

Price reduced for quick sale. High-Profit Patch, Accessory & Gift Shop in West Edmonton Mall. Located at the entrance of Galaxyland, this turn-key business offers a fantastic opportunity to own your profitable business in one of Edmonton's busiest areas. With a target market of teenagers and young adults, this compact store generates maximum revenue in a small space. The business boasts an impressive profit margin of over 80%, making it an incredibly cost-effective operation. Ideal for owner-operators, especially couples, this business has steady and increasing sales with a growing customer base. No prior experience is necessary, as the seller will provide thorough training before closing, allowing the new owner to hit the ground running. Donâ€™t miss out on this opportunity to own a thriving business in a prime location!



Essential Information

| | |
|-----------|----------|
| MLS® # | E4403944 |
| Price | \$65,000 |
| Bathrooms | 0.00 |
| Acres | 0.00 |
| Type | Business |
| Status | Active |

Community Information

| | |
|-------------|-----------|
| Address | N/a |
| Area | Edmonton |
| Subdivision | Summerlea |
| City | Edmonton |
| County | ALBERTA |
| Province | AB |
| Postal Code | T5T 4M2 |

Additional Information

| | |
|----------------|-------------------|
| Date Listed | August 28th, 2024 |
| Days on Market | 356 |
| Zoning | Zone 20 |

DATA IS DEEMED RELIABLE BUT IS NOT GUARANTEED ACCURATE BY THE REALTORS® ASSOCIATION OF EDMONTON. COPYRIGHT 2025 BY THE REALTORS® ASSOCIATION OF EDMONTON. ALL RIGHTS RESERVED. Trademarks are owned or controlled by the Canadian Real Estate Association (CREA) and identify real estate professionals who are members of CREA (REALTOR®, REALTORS®) and/or the quality of services they provide (MLS®, Multiple Listing Service®)

Listing information last updated on August 19th, 2025 at 6:47pm MDT