

# \$190,000 - 60 150 Edwards Drive, Edmonton

MLS® #E4428573

**\$190,000**

2 Bedroom, 1.00 Bathroom, 797 sqft  
Condo / Townhouse on 0.00 Acres

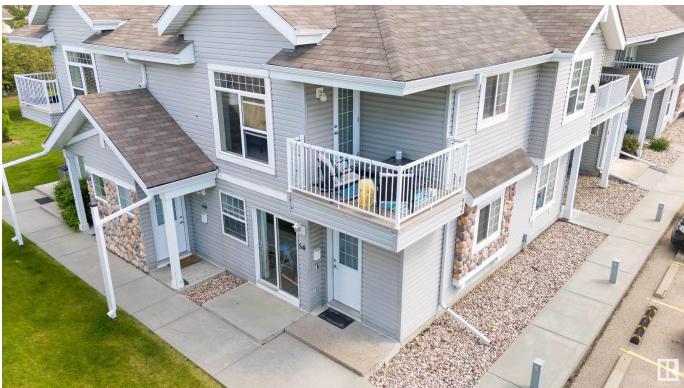
Ellerslie, Edmonton, AB

Welcome Home! This well-kept, single-level condo offers comfortable living with 2 bedrooms and 1 bathroom in an upper-floor, end-unit â€” perfect for first-time home buyers or investors looking to start their rental portfolio. Low condo fees cover heat and water for added affordability. Step out onto your private balcony overlooking peaceful green space, ideal for unwinding or letting your pet enjoy the fresh air (board-approved, up to 50 lbs). The spacious, open-concept living area flows into a kitchen with ample counter space and a corner pantry. The primary bedroom includes a walk-in closet, while a well-sized second bedroom makes an ideal guest room or office. Enjoy the convenience of a powered parking stall, in-unit laundry, and extra storage. Located near Ellerslie Road, Anthony Henday, South Edmonton Common, parks, and playgrounds â€” everything you need is within easy reach. Move-in ready and designed for relaxed, easy living!

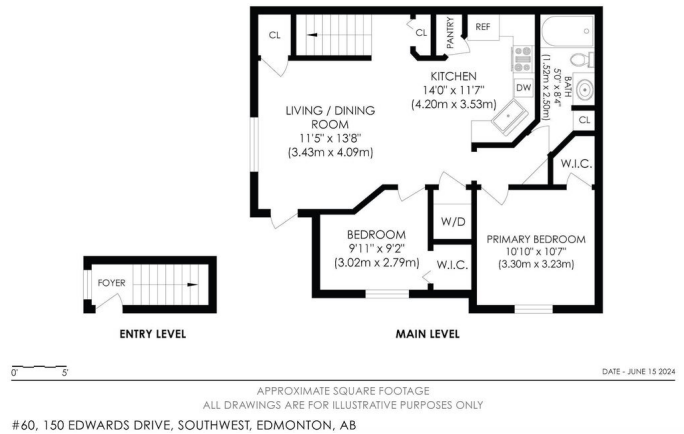
Built in 2005

## Essential Information

|           |           |
|-----------|-----------|
| MLS® #    | E4428573  |
| Price     | \$190,000 |
| Bedrooms  | 2         |
| Bathrooms | 1.00      |



MAIN LEVEL : 756 SQFT / 70 SQM  
ENTRY LEVEL : 40 SQFT / 4 SQM  
TOTAL AREA : 796 SQFT / 74 SQM



|                |                   |
|----------------|-------------------|
| Full Baths     | 1                 |
| Square Footage | 797               |
| Acres          | 0.00              |
| Year Built     | 2005              |
| Type           | Condo / Townhouse |
| Sub-Type       | Carriage          |
| Style          | Bungalow          |
| Status         | Active            |

### Community Information

|             |                      |
|-------------|----------------------|
| Address     | 60 150 Edwards Drive |
| Area        | Edmonton             |
| Subdivision | Ellerslie            |
| City        | Edmonton             |
| County      | ALBERTA              |
| Province    | AB                   |
| Postal Code | T6X 1M4              |

### Amenities

|                |   |
|----------------|---|
| Amenities      | Deck, Detectors Smoke, Parking-Visitor, Storage-In-Suite, Vaulted Ceiling |
| Parking Spaces | 1   |
| Parking        | Stall   |

### Interior

|              |  |
|--------------|--|
| Appliances   | Dishwasher-Built-In, Fan-Ceiling, Hood Fan, Refrigerator, Stacked Washer/Dryer, Stove-Electric, Window Coverings |
| Heating      | In Floor Heat System, See Remarks  |
| Stories      | 2  |
| Has Basement | Yes  |
| Basement     | None, No Basement  |

### Exterior

|                   |   |
|-------------------|---|
| Exterior          | Wood, Stone, Vinyl  |
| Exterior Features | Airport Nearby, Backs Onto Park/Trees, Corner Lot, Golf Nearby, Low Maintenance Landscape, Playground Nearby, Public Swimming Pool, Public Transportation, Schools, Shopping Nearby |
| Roof              | Asphalt Shingles  |
| Construction      | Wood, Stone, Vinyl  |

Foundation                      Concrete Perimeter

**Additional Information**

Date Listed                      April 2nd, 2025  
Days on Market                29  
Zoning                              Zone 53  
Condo Fee                        \$399

DATA IS DEEMED RELIABLE BUT IS NOT GUARANTEED ACCURATE BY THE REALTORS® ASSOCIATION OF EDMONTON. COPYRIGHT 2025 BY THE REALTORS® ASSOCIATION OF EDMONTON. ALL RIGHTS RESERVED.Trademarks are owned or controlled by the Canadian Real Estate Association (CREA) and identify real estate professionals who are members of CREA (REALTOR®, REALTORS®) and/or the quality of services they provide (MLS®, Multiple Listing Service®)  
Listing information last updated on May 1st, 2025 at 3:17pm MDT