

\$730,000 - 5230 Admiral Walter Hose Street, Edmonton

MLS® #E4432281

\$730,000

4 Bedroom, 3.50 Bathroom, 2,442 sqft

Single Family on 0.00 Acres

Griesbach, Edmonton, AB

This immaculately maintained, custom-built Homes by Avi home is loaded with upgrades and high-end features. Sunlight and space abound throughout, with hardwood floors, Berber carpeting, and high-end appliances by Miele, GE Profile, Marvel, and Whirlpool. The oversized 24x24 insulated garage is spotless, wired for EVs, and zoned for a suite. Enjoy summer in the sun-drenched backyard with beautiful custom landscaping, privacy trees, perennials, shrubs, and rain barrels. The massive composite deck with glass railings adds style and ease. Inside offers a large den, formal dining, main floor laundry, and a spacious great room with gas fireplace. Upstairs: 3 generous bedrooms, including a sprawling primary with a luxurious ensuite and walk-in. The finished basement includes a rec room, fireplace, and extra bedroom. With A/C, Hardie board siding, water softener, and pristine condition throughout, this home is impressively clean, spacious, and move-in ready.

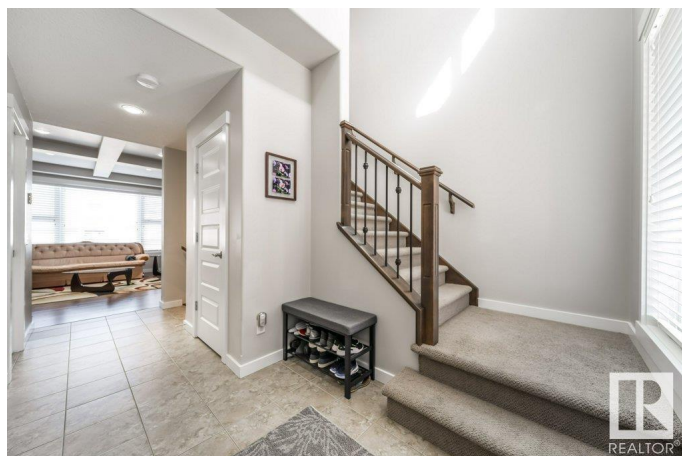
Built in 2014

Essential Information

MLS® # E4432281

Price \$730,000

Bedrooms 4



Bathrooms	3.50
Full Baths	3
Half Baths	1
Square Footage	2,442
Acres	0.00
Year Built	2014
Type	Single Family
Sub-Type	Detached Single Family
Style	2 Storey
Status	Active

Community Information

Address	5230 Admiral Walter Hose Street
Area	Edmonton
Subdivision	Griesbach
City	Edmonton
County	ALBERTA
Province	AB
Postal Code	T5E 6T4

Amenities

Amenities	Ceiling 9 ft., Deck, No Smoking Home
Parking	Double Garage Detached, Insulated, Over Sized

Interior

Interior Features	ensuite bathroom
Appliances	Air Conditioning-Central, Alarm/Security System, Dishwasher-Built-In, Dryer, Hood Fan, Oven-Microwave, Refrigerator, Stove-Gas, Washer, Water Softener, Window Coverings, Wine/Beverage Cooler
Heating	Forced Air-1, Natural Gas
Fireplace	Yes
Fireplaces	Direct Vent
Stories	3
Has Basement	Yes
Basement	Full, Finished

Exterior

Exterior	Wood, Stone, Hardie Board Siding
Exterior Features	Back Lane, Fenced, Landscaped, Schools, Shopping Nearby

Roof	Asphalt Shingles
Construction	Wood, Stone, Hardie Board Siding
Foundation	Concrete Perimeter

School Information

Elementary	Major-General Griesbach Sc
Middle	Major-General Griesbach Sc
High	Queen Elizabeth School

Additional Information

Date Listed	April 23rd, 2025
Days on Market	8
Zoning	Zone 27

DATA IS DEEMED RELIABLE BUT IS NOT GUARANTEED ACCURATE BY THE REALTORS® ASSOCIATION OF EDMONTON. COPYRIGHT 2025 BY THE REALTORS® ASSOCIATION OF EDMONTON. ALL RIGHTS RESERVED. Trademarks are owned or controlled by the Canadian Real Estate Association (CREA) and identify real estate professionals who are members of CREA (REALTOR®, REALTORS®) and/or the quality of services they provide (MLS®, Multiple Listing Service®)

Listing information last updated on May 1st, 2025 at 9:02am MDT