

\$510,000 - 4 Delorme Place, St. Albert

MLS® #E4433144

\$510,000

4 Bedroom, 2.50 Bathroom, 2,338 sqft

Single Family on 0.00 Acres

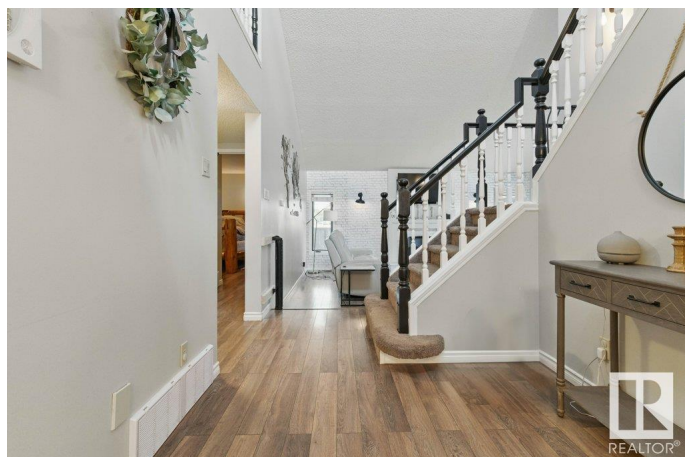
Deer Ridge (St. Albert), St. Albert, AB

Welcome to Deer Ridge in St. Albert, where charm meets family-friendly living! This spacious home is designed with growing families in mind, offering a bright and open front entryway that sets the tone for the entire space. The main floor features a convenient laundry area, a well-appointed kitchen with plenty of space to gather, and a family room with soaring ceilings that create a grand, airy feel. The main floor primary suite is a true retreat, complete with a walk-in closet and a luxurious 5-piece ensuite. Upstairs, you'll find two generously sized bedrooms and a full 4-piece bathroom, perfect for kids or guests. The semi-finished basement offers incredible flexibility—whether you envision a cozy media room, kids' play area, or an epic man cave, the possibilities are endless! Plenty of room for additional storage and bedrooms. Don't miss the opportunity to live in this vibrant, established community!

Built in 1988

Essential Information

MLS® #	E4433144
Price	\$510,000
Bedrooms	4
Bathrooms	2.50
Full Baths	2



Half Baths	1
Square Footage	2,338
Acres	0.00
Year Built	1988
Type	Single Family
Sub-Type	Detached Single Family
Style	2 Storey
Status	Active

Community Information

Address	4 Delorme Place
Area	St. Albert
Subdivision	Deer Ridge (St. Albert)
City	St. Albert
County	ALBERTA
Province	AB
Postal Code	T8N 4V8

Amenities

Amenities	See Remarks
Parking	Double Garage Attached

Interior

Interior Features	ensuite bathroom
Appliances	Dishwasher-Built-In, Dryer, Microwave Hood Fan, Refrigerator, Stove-Electric, Washer, Window Coverings
Heating	Forced Air-2, Natural Gas
Stories	3
Has Basement	Yes
Basement	Full, Partially Finished

Exterior

Exterior	Wood, Stucco, Vinyl
Exterior Features	Fenced, Golf Nearby, Landscaped, Schools, Shopping Nearby, See Remarks
Roof	Asphalt Shingles
Construction	Wood, Stucco, Vinyl
Foundation	Concrete Perimeter

Additional Information

Date Listed April 28th, 2025

Days on Market 3

Zoning Zone 24

DATA IS DEEMED RELIABLE BUT IS NOT GUARANTEED ACCURATE BY THE REALTORS® ASSOCIATION OF EDMONTON. COPYRIGHT 2025 BY THE REALTORS® ASSOCIATION OF EDMONTON. ALL RIGHTS RESERVED. Trademarks are owned or controlled by the Canadian Real Estate Association (CREA) and identify real estate professionals who are members of CREA (REALTOR®, REALTORS®) and/or the quality of services they provide (MLS®, Multiple Listing Service®)

Listing information last updated on May 1st, 2025 at 2:47pm MDT