

\$229,000 - 9332 106a Avenue, Edmonton

MLS® #E4433150

\$229,000

2 Bedroom, 1.50 Bathroom, 889 sqft
Single Family on 0.00 Acres

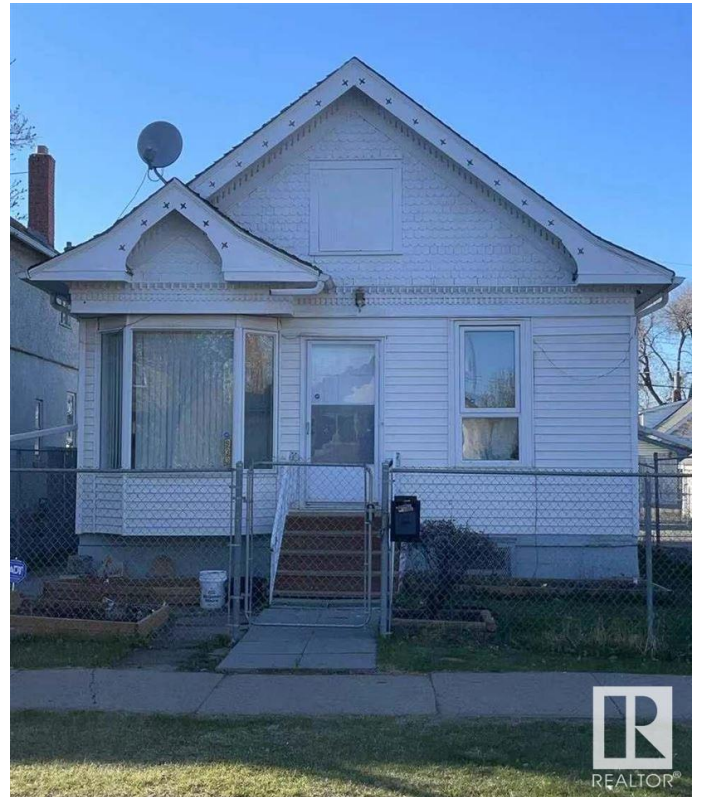
Mccauley, Edmonton, AB

GREAT INVESTMENT PROPERTY LOCATED AT CENTRAL EDMONTON. This cute Bungalow have 2 bedroom, 1.5 bath, advanced modern kitchen, living & dining area. Double paned windows, gorgeous laminate floorings. **WHOLE HOUSE RENO FOUR YEARS AGO.** The yard has new designed raised garden beds and fenced parking. City also plan to build a bicycle lane ahead of the house. Walk to grocery store, restaurant and bus stops. Easy access to downtown, south side and all amenities! Don't miss out this low affordable house!

Built in 1908

Essential Information

MLS® #	E4433150
Price	\$229,000
Bedrooms	2
Bathrooms	1.50
Full Baths	1
Half Baths	1
Square Footage	889
Acres	0.00
Year Built	1908
Type	Single Family
Sub-Type	Detached Single Family
Style	Raised Bungalow



Status Active

Community Information

Address 9332 106a Avenue
Area Edmonton
Subdivision Mccauley
City Edmonton
County ALBERTA
Province AB
Postal Code T5H 0S7

Amenities

Amenities Detectors Smoke, See Remarks
Parking Single Garage Detached

Interior

Appliances Dishwasher-Built-In, Dryer, Garage Opener, Refrigerator, Stove-Electric, Washer
Heating Forced Air-1, Natural Gas
Stories 1
Has Basement Yes
Basement Partial, Unfinished

Exterior

Exterior Wood, Vinyl
Exterior Features Back Lane, Fenced, Public Transportation, Schools, Shopping Nearby, See Remarks
Roof Asphalt Shingles
Construction Wood, Vinyl
Foundation Concrete Perimeter

Additional Information

Date Listed April 28th, 2025
Days on Market 50
Zoning Zone 13

DATA IS DEEMED RELIABLE BUT IS NOT GUARANTEED ACCURATE BY THE REALTORS® ASSOCIATION OF EDMONTON. COPYRIGHT 2025 BY THE REALTORS® ASSOCIATION OF EDMONTON. ALL RIGHTS RESERVED. Trademarks are owned or controlled by the Canadian Real Estate Association (CREA) and identify real estate professionals who are members of CREA (REALTOR®, REALTORS®) and/or the quality of services they provide (MLS®, Multiple Listing Service®)

Listing information last updated on June 17th, 2025 at 6:32am MDT