

\$259,000 - 101 1203 163 Street, Edmonton

MLS® #E4433488

\$259,000

1 Bedroom, 1.00 Bathroom, 860 sqft
Condo / Townhouse on 0.00 Acres

Glenridding Heights, Edmonton, AB

For more information, please click on "View Listing on Realtor Website". South-facing with stunning views. Enjoy natural light all day and relax on your oversized balcony overlooking green space. Recently installed a retractable outdoor sunshade for added comfort.

Brand-new premium vinyl plank flooring with a lifetime warranty (2024), plus new premium carpet and underlay on stairs (2024).

Semi-finished attached garage with built-in shelving provides extra storage and organization. Featuring quartz countertops, a glass tile backsplash, and upgraded staggered cabinets with crown molding for a high-end look. Smart switches installed in most areas.

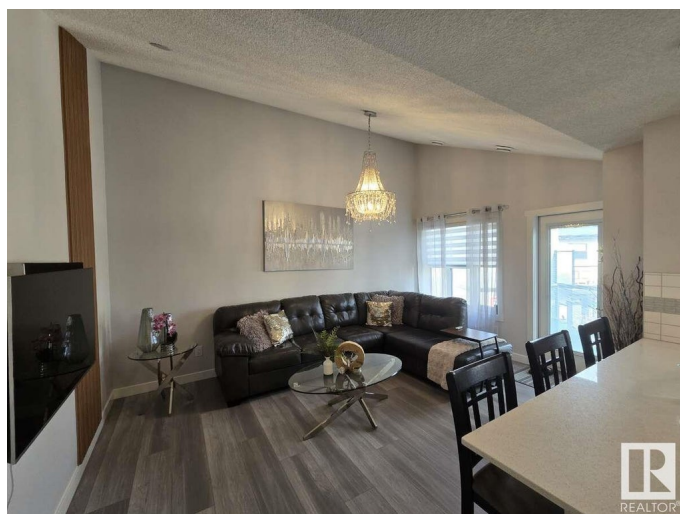
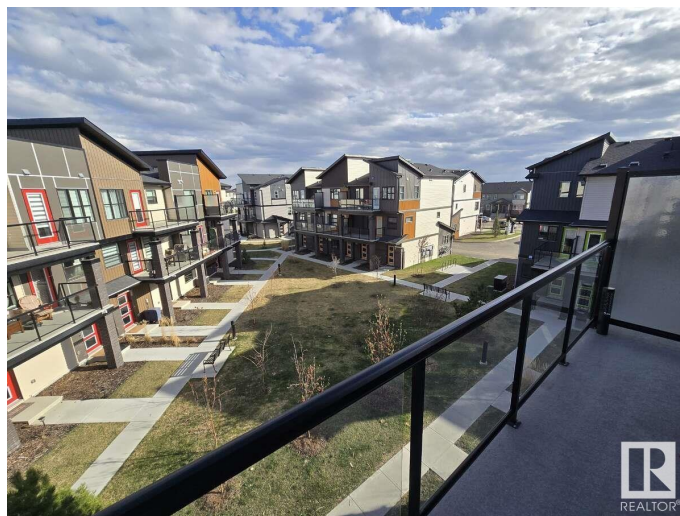
High-end finishes such as tiled tub shower, custom-designed and built closet space (2021), and stainless steel appliances.

Year-round comfort with a portable A/C unit to keep cool in the summer. Affordable condo fees which cover outdoor maintenance and insurance for a hassle-free lifestyle.

Built in 2017

Essential Information

MLS® #	E4433488
Price	\$259,000
Bedrooms	1
Bathrooms	1.00



Full Baths	1
Square Footage	860
Acres	0.00
Year Built	2017
Type	Condo / Townhouse
Sub-Type	Stacked Townhouse
Style	2 Storey
Status	Active

Community Information

Address	101 1203 163 Street
Area	Edmonton
Subdivision	Glenridding Heights
City	Edmonton
County	ALBERTA
Province	AB
Postal Code	T6W 3X1

Amenities

Amenities	Closet Organizers, Detectors Smoke, Exterior Walls- 2"x6", Hot Water Electric, No Smoking Home, Vaulted Ceiling
Parking Spaces	1
Parking	Single Garage Attached

Interior

Interior Features	ensuite bathroom
Appliances	Dishwasher-Built-In, Garage Opener, Humidifier-Power(Furnace), Microwave Hood Fan, Refrigerator, Stacked Washer/Dryer, Stove-Electric, Window Coverings
Heating	Forced Air-1, Natural Gas
Stories	2
Has Basement	Yes
Basement	None, No Basement

Exterior

Exterior	Wood, Asphalt, Concrete, Vinyl
Exterior Features	Landscaped, Low Maintenance Landscape, No Through Road, Park/Reserve, Shopping Nearby, Treed Lot
Roof	Asphalt Shingles

Construction Wood, Asphalt, Concrete, Vinyl
Foundation Concrete Perimeter

Additional Information

Date Listed April 30th, 2025

Days on Market 1

Zoning Zone 56

Condo Fee \$207

DATA IS DEEMED RELIABLE BUT IS NOT GUARANTEED ACCURATE BY THE REALTORS® ASSOCIATION OF EDMONTON. COPYRIGHT 2025 BY THE REALTORS® ASSOCIATION OF EDMONTON. ALL RIGHTS RESERVED. Trademarks are owned or controlled by the Canadian Real Estate Association (CREA) and identify real estate professionals who are members of CREA (REALTOR®, REALTORS®) and/or the quality of services they provide (MLS®, Multiple Listing Service®)

Listing information last updated on May 1st, 2025 at 6:02am MDT