

\$370,000 - 4 979 Crystallina Nera Way, Edmonton

MLS® #E4440634

\$370,000

4 Bedroom, 2.50 Bathroom, 1,688 sqft
Condo / Townhouse on 0.00 Acres

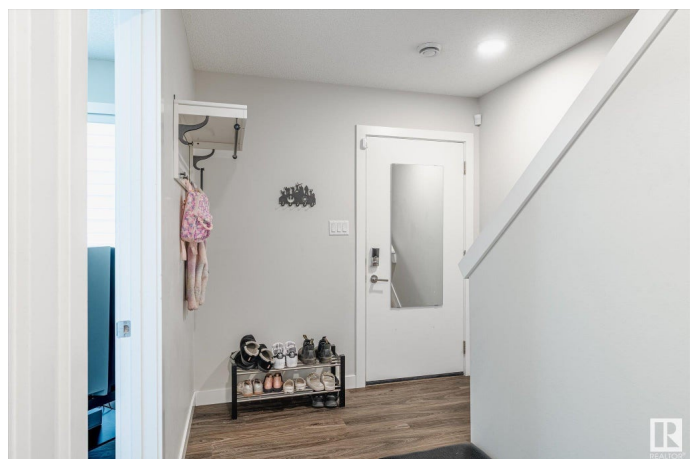
Crystallina Nera West, Edmonton, AB

Fabulous family 3 + 1 bedroom home in Cystallina Nera! Welcome to the modern and functional unit 4 at the popular complex of Peak 39, conveniently located with direct access to the Henday, all amenities, and close proximity to Edmonton Garrison too. This 3 storey townhome is complete with double attached garage, central A/C and begins with a closed off flex room on the main floor fit for an extra bedroom or office! Upstairs enjoy open concept living with tons of natural light, enjoying centre kitchen with long island, stainless steel appliances, vinyl plank flooring, half bathroom and access to the front balcony too. The top floor is home to 3 bedrooms, all beautifully lit thanks to large windows including the generous primary bedroom with walk in closet and ensuite. Don't forget full bathroom and upstairs laundry on this level! Modern and clean finishes are continued throughout this home, making it the perfect place for you to call home. Form and function all at a great price - this could be the one.

Built in 2019

Essential Information

MLS® #	E4440634
Price	\$370,000
Bedrooms	4



Bathrooms	2.50
Full Baths	2
Half Baths	1
Square Footage	1,688
Acres	0.00
Year Built	2019
Type	Condo / Townhouse
Sub-Type	Townhouse
Style	3 Storey
Status	Active

Community Information

Address	4 979 Crystallina Nera Way
Area	Edmonton
Subdivision	Crystallina Nera West
City	Edmonton
County	ALBERTA
Province	AB
Postal Code	T5Z 0S3

Amenities

Amenities	Air Conditioner, Deck, No Smoking Home, Parking-Visitor, See Remarks
Parking	Double Garage Attached

Interior

Interior Features	ensuite bathroom
Appliances	Air Conditioning-Central, Dishwasher-Built-In, Dryer, Microwave Hood Fan, Refrigerator, Stove-Electric, Washer, Window Coverings
Heating	Forced Air-1, Natural Gas
# of Stories	3
Stories	3
Has Basement	Yes
Basement	None, No Basement

Exterior

Exterior	Wood, Vinyl
Exterior Features	Flat Site, Fruit Trees/Shrubs, Low Maintenance Landscape, Not Fenced, Playground Nearby, Public Transportation, Schools, Shopping Nearby
Roof	Asphalt Shingles

Construction	Wood, Vinyl
Foundation	Concrete Perimeter

Additional Information

Date Listed	June 5th, 2025
Days on Market	12
Zoning	Zone 28
Condo Fee	\$210

DATA IS DEEMED RELIABLE BUT IS NOT GUARANTEED ACCURATE BY THE REALTORS® ASSOCIATION OF EDMONTON. COPYRIGHT 2025 BY THE REALTORS® ASSOCIATION OF EDMONTON. ALL RIGHTS RESERVED.Trademarks are owned or controlled by the Canadian Real Estate Association (CREA) and identify real estate professionals who are members of CREA (REALTOR®, REALTORS®) and/or the quality of services they provide (MLS®, Multiple Listing Service®)

Listing information last updated on June 17th, 2025 at 6:02am MDT