

Courtesy Of Jeff D Jackson Of Bode

## \$644,900 - 2820 65 Street, Edmonton

MLS® #E4441549

**\$644,900**

4 Bedroom, 3.00 Bathroom, 2,216 sqft

Single Family on 0.00 Acres

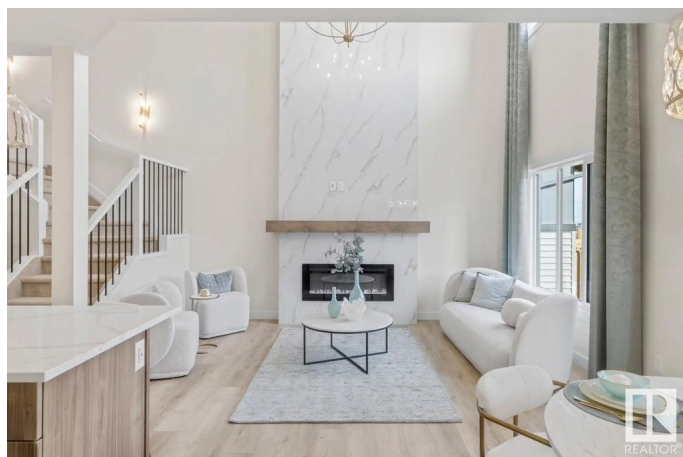
Mattson, Edmonton, AB

The Victor model is where elegance meets practicality, offering a well-designed space for families of all sizes. From the moment you step inside, the soaring open-to-above feature in the great room and stairwell creates an inviting and expansive feel. At the centre of it all, a beautifully crafted fireplace adds warmth and sophistication, making it the perfect focal point for gatherings and relaxation. Designed with flexibility in mind, the main floor includes a fourth bedroom, ideal for hosting guests or setting up a home office.. A well-organized mudroom provides a functional entryway, helping to keep everything tidy and easily accessible. Upstairs, storage is never an issue, as every bedroom comes with its own spacious walk-in closet, ensuring plenty of room for everyone's belongings. Blending style with thoughtful design, the Victor model delivers a home that's as beautiful as it is practical, making everyday living effortless and refined. Photos are representative.

Built in 2025

### Essential Information

MLS® #	E4441549
Price	\$644,900
Bedrooms	4
Bathrooms	3.00



Full Baths	3
Square Footage	2,216
Acres	0.00
Year Built	2025
Type	Single Family
Sub-Type	Detached Single Family
Style	2 Storey
Status	Active

### Community Information

Address	2820 65 Street
Area	Edmonton
Subdivision	Mattson
City	Edmonton
County	ALBERTA
Province	AB
Postal Code	T6X 1Z4

### Amenities

Amenities	See Remarks
Parking Spaces	4
Parking	Double Garage Attached

### Interior

Interior Features	ensuite bathroom
Appliances	None
Heating	Forced Air-1, Natural Gas
Fireplace	Yes
Fireplaces	Insert
Stories	2
Has Basement	Yes
Basement	Full, Unfinished

### Exterior

Exterior	Wood, Fiber Cement, Stone, Vinyl
Exterior Features	Playground Nearby, Schools, Shopping Nearby
Roof	Asphalt Shingles
Construction	Wood, Fiber Cement, Stone, Vinyl
Foundation	Concrete Perimeter

**Additional Information**

Date Listed                June 10th, 2025  
Days on Market        6  
Zoning                    Zone 53

DATA IS DEEMED RELIABLE BUT IS NOT GUARANTEED ACCURATE BY THE REALTORS® ASSOCIATION OF EDMONTON. COPYRIGHT 2025 BY THE REALTORS® ASSOCIATION OF EDMONTON. ALL RIGHTS RESERVED.Trademarks are owned or controlled by the Canadian Real Estate Association (CREA) and identify real estate professionals who are members of CREA (REALTOR®, REALTORS®) and/or the quality of services they provide (MLS®, Multiple Listing Service®)  
Listing information last updated on June 16th, 2025 at 4:02pm MDT