

\$599,900 - 8438 Sloane Crescent, Edmonton

MLS® #E4441918

\$599,900

4 Bedroom, 3.50 Bathroom, 1,841 sqft

Single Family on 0.00 Acres

South Terwillegar, Edmonton, AB

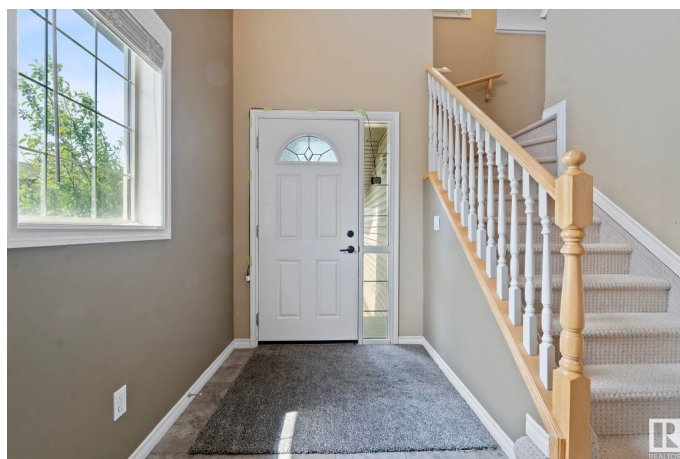
Stunning, fully finished 2-story, 4-bedroom, 4-bath home in the sought-after Southwest community of South Terwilliger. Located on a quiet cul-de-sac, this spacious home features an open-concept main floor. Living room with gas fireplace, a chef's kitchen with stainless steel appliances, a large island with storage, and a pantry. 2 pc bath and mudroom/laundry with garage access complete the main. Upstairs, enjoy a massive bonus room, a primary suite with a 5-pc ensuite and walk-in closet, two additional bedrooms, and a 4-pc bath. The fully finished basement offers a great room with wet bar, 4th bedroom, and 3-pc bath, plus a utility room with a second washer/dryer. Built-in sound system throughout. The nicely landscaped east/south-facing backyard features a large deck with gas bbq hookup, gazebo and a shed. Double attached garage, parking pad and street parking. Close to top-rated schools, parks, shopping, public transit, and major roadways, all while being tucked away on a quiet street.

Built in 2007

Essential Information

MLS® # E4441918

Price \$599,900



Bedrooms	4
Bathrooms	3.50
Full Baths	3
Half Baths	1
Square Footage	1,841
Acres	0.00
Year Built	2007
Type	Single Family
Sub-Type	Detached Single Family
Style	2 Storey
Status	Active

Community Information

Address	8438 Sloane Crescent
Area	Edmonton
Subdivision	South Terwillegar
City	Edmonton
County	ALBERTA
Province	AB
Postal Code	T6R 0L3

Amenities

Amenities	On Street Parking, Deck, Wet Bar, Natural Gas BBQ Hookup
Parking	Double Garage Attached, Front Drive Access, Parking Pad Cement/Paved

Interior

Interior Features	ensuite bathroom
Appliances	Dishwasher-Built-In, Dryer, Garage Control, Garage Opener, Microwave Hood Fan, Refrigerator, Storage Shed, Stove-Electric, Washer, Window Coverings
Heating	Forced Air-1, Natural Gas
Fireplace	Yes
Fireplaces	Glass Door, Mantel
Stories	3
Has Basement	Yes
Basement	Full, Finished

Exterior

Exterior	Wood, Brick, Vinyl
Exterior Features	Corner Lot, Cul-De-Sac, Fenced, Flat Site, Golf Nearby, Landscaped, Playground Nearby, Public Transportation, Schools, Shopping Nearby, See Remarks
Roof	Asphalt Shingles
Construction	Wood, Brick, Vinyl
Foundation	Concrete Perimeter

Additional Information

Date Listed	June 12th, 2025
Days on Market	4
Zoning	Zone 14

DATA IS DEEMED RELIABLE BUT IS NOT GUARANTEED ACCURATE BY THE REALTORS® ASSOCIATION OF EDMONTON. COPYRIGHT 2025 BY THE REALTORS® ASSOCIATION OF EDMONTON. ALL RIGHTS RESERVED.Trademarks are owned or controlled by the Canadian Real Estate Association (CREA) and identify real estate professionals who are members of CREA (REALTOR®, REALTORS®) and/or the quality of services they provide (MLS®, Multiple Listing Service®)

Listing information last updated on June 16th, 2025 at 2:17pm MDT