

Courtesy Of John Lao Of Initia Real Estate

\$385,000 - 162 804 Welsh Drive, Edmonton

MLS® #E4459020

\$385,000

3 Bedroom, 2.50 Bathroom, 1,405 sqft
Condo / Townhouse on 0.00 Acres

Walker, Edmonton, AB

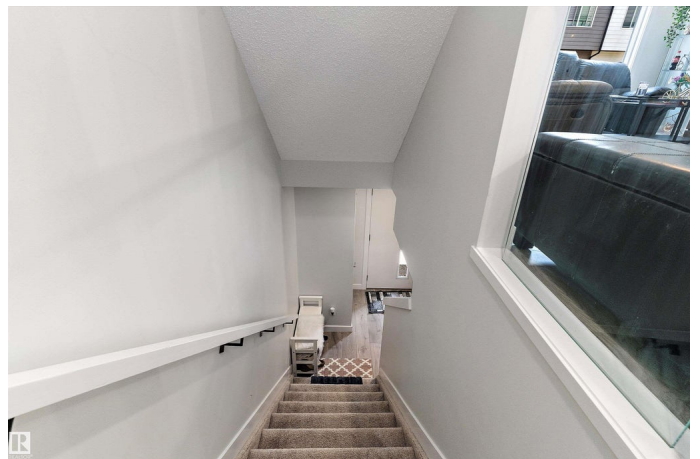
Modern townhome unit nestled in the desirable community of Walker. Built by Landmark Homes, this unit features 3 bedrooms plus a den, 2.5 baths and 2 car garage. Upon stepping into the main level, you will be greeted with an open concept layout with the kitchen boasting stainless steel appliances and quartz countertops. Also featuring a fenced front yard. Located close to shopping, amenities and highways.

Built in 2023

Essential Information

MLS® #	E4459020
Price	\$385,000
Bedrooms	3
Bathrooms	2.50
Full Baths	2
Half Baths	1
Square Footage	1,405
Acres	0.00
Year Built	2023
Type	Condo / Townhouse
Sub-Type	Townhouse
Style	3 Storey
Status	Active

Community Information



Address 162 804 Welsh Drive
Area Edmonton
Subdivision Walker
City Edmonton
County ALBERTA
Province AB
Postal Code T6X 1Y8

Amenities

Amenities No Smoking Home, See Remarks
Parking Spaces 2
Parking Double Garage Attached

Interior

Interior Features ensuite bathroom
Appliances Dishwasher-Built-In, Dryer, Microwave Hood Fan, Refrigerator,
Stove-Electric, Washer
Heating Forced Air-1, Natural Gas
Stories 3
Has Basement Yes
Basement None, No Basement

Exterior

Exterior Wood, Vinyl
Exterior Features Back Lane, Schools, Shopping Nearby
Roof Asphalt Shingles
Construction Wood, Vinyl
Foundation Concrete Perimeter

Additional Information

Date Listed September 23rd, 2025
Days on Market 47
Zoning Zone 53
Condo Fee \$156

DATA IS DEEMED RELIABLE BUT IS NOT GUARANTEED ACCURATE BY THE REALTORS® ASSOCIATION OF EDMONTON. COPYRIGHT 2025 BY THE REALTORS® ASSOCIATION OF EDMONTON. ALL RIGHTS RESERVED. Trademarks are owned or controlled by the Canadian Real Estate Association (CREA) and identify real estate professionals who are members of CREA (REALTOR®, REALTORS®) and/or the quality of services they provide (MLS®, Multiple Listing Service®)

Listing information last updated on November 8th, 2025 at 11:32pm MST